



Network Box

Dashboard Quick Start



www.network-box.com



Dashboard Quick Start

Getting Started Login Screen

Logging into the Dashboard

#1

To access the Network Box Dashboard, in a web browser, type:
https://admin.network-box.com

For remote access:

https://[box IP address]:4243

Secured connection (**Recommended**)

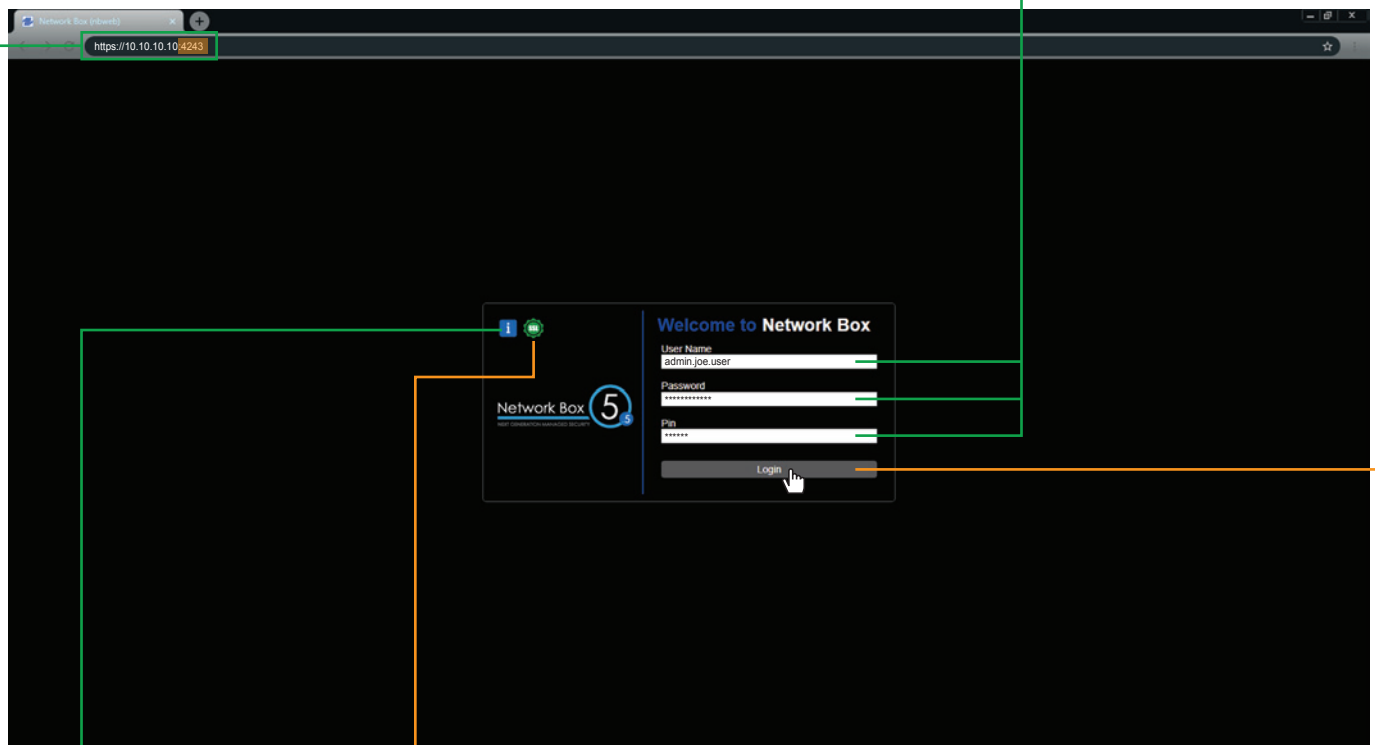
http://[box IP address]:4242

Unencrypted connection

#2

At the login screen, enter your *User Name* and *Password*, and *Pin* (this is an optional service for TOTP dual-factor authentication).

Once you have entered all your credentials, click **Login**, and you will be taken to the dashboard *Overview* screen.



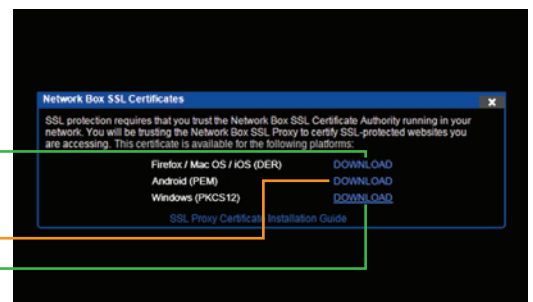
Click for box information:

- Box Name
- Device ID
- Network Box Device Token

Link to download the trusted certificate for SSL proxy users. **This is not required to access the dashboard.**

Supported platforms:

- Firefox
- Mac OS
- iOS
- Android
- Windows



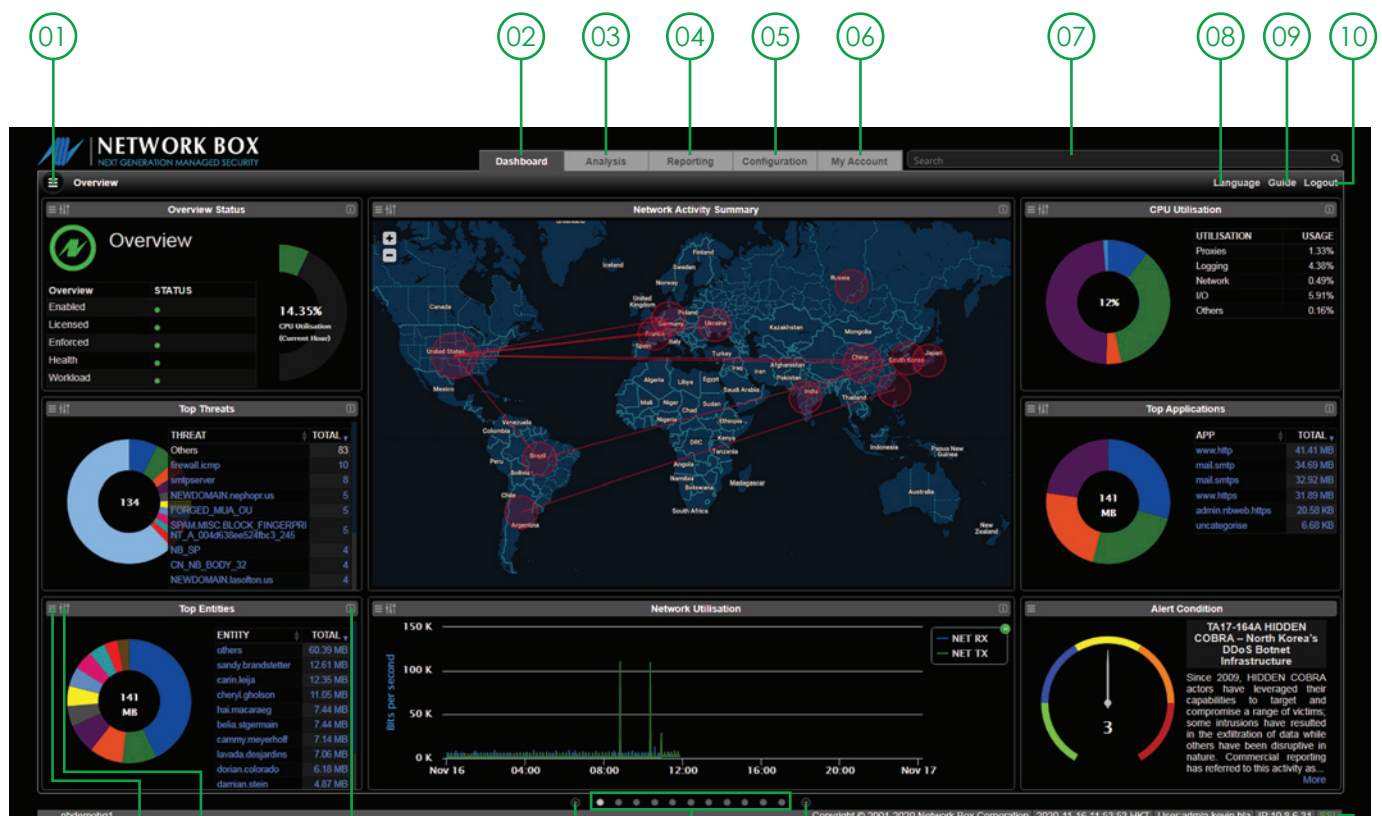


Dashboard Quick Start

Main Dashboard Screens Overview

Overview Screen

When you log into the Network Box Dashboard, you will enter the main *Overview* screen. At a glance, the screen gives you real-time status for your network and your Network Box system.



- 01 Main Menu button
- 02 Home / Dashboard tab
- 03 Analysis tab
- 04 Reporting tab
- 05 Configuration tab
- 06 My Account tab
- 07 Holistic search bar

- 08 Language button
- 09 Download guide button
- 10 Logout button
- 11 Box ID
- 12 Widget - Menu button
- 13 Widget - Filters button
- 14 Widget - Information button

- 15 Scroll to previous Dashboard
- 16 Dashboard navigation buttons
- 17 Scroll to next Dashboard
- 18 Date / Time display
- 19 User ID
- 20 IP address
- 21 Encryption status



Dashboard Quick Start

Main Dashboard Screens Main menu button

Main Menu Button



For greater accessibility, the Network Box Dashboard has multiple main dashboard screens, as follows:

- Overview
- Box
- Network
- VPN
- Firewall
- Intrusions
- DDoS
- Mail
- Spam
- Web Client
- WAF

To switch between the different screens, click the main menu button (☰). From the pull-down menu, select the screen you want to access.

Alternatively, you can also use the dashboard navigation buttons at the bottom, to jump to the desired screen.

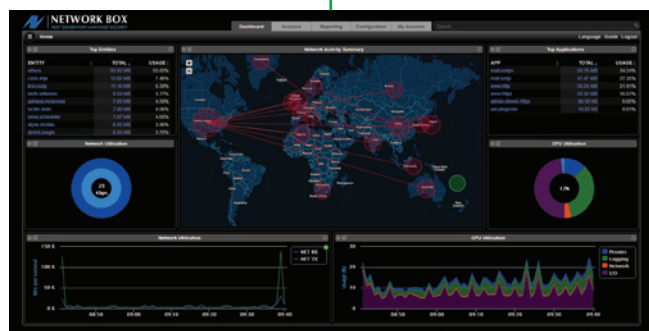


Switching between default layouts

The dashboard has two default layouts: **Classic** and **Advanced**. By default, the layout is set to **Advanced**. However, you can switch to the **Classic** layout by:

☰ > Dashboard > Reset Layout > Default

Note: by resetting the layout, you will lose any saved custom dashboard layouts.



Default (Classic) Layout



Advanced Layout



Dashboard Quick Start

Main Dashboard Screens Widget buttons

Customising appearance and display data



Menu button

Using the *Menu* button, you can create instant or customised reports. Additionally, using the menu button, you can change the appearance of the widget.

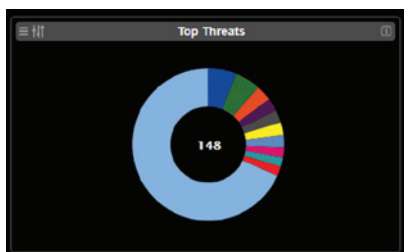
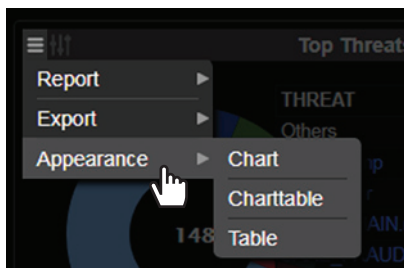
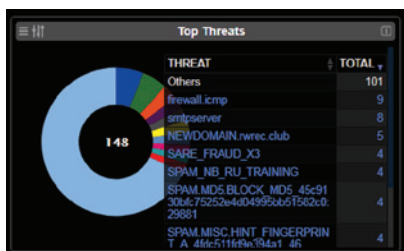


Chart view



Charttable view

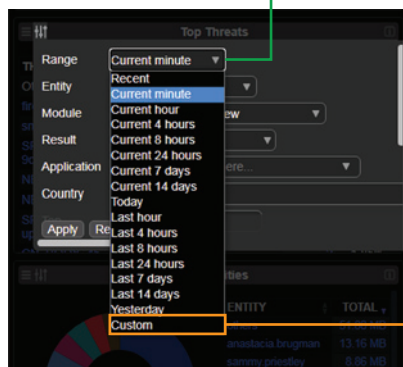
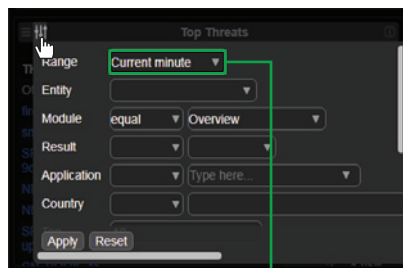
THREAT	TOTAL	RATIO
Others	66	59.46%
smtpserver	19	16.22%
SPAM_NB_BLANKARECORD	5	4.50%
firewall.icmp	4	3.60%
SPAM.MISC.HINT_FINGERPRINT_A_4f0c511f	4	3.60%
d9e394a1_46	3	2.70%
SPAM_NB_WEBINAR	3	2.70%
NEWDOMAIN.ultrapasa.us	3	2.70%
NEWDOMAIN.reintoceter.us	2	1.80%

Table view



Filters button

With the *Filters* button, you can adjust the filters to show the data you want. When you have selected the filter options, click **Apply** to continue or **Reset** to return to defaults.



In addition to the pre-set time ranges available from the pull-down menu, you also have the option to set a *Custom* time range.

Current vs Last

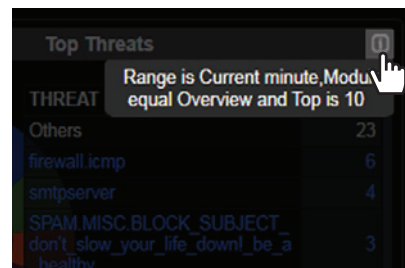
Current, this is the timeframe from the current time to the previous xxx timeframe, and *Last* is for the last complete timeframe.

e.g. if current time is: **15:15**
Current hour: **14:15 to 15:15**
Last hour: **14:00 to 14:59**



Information button

To view the displayed range settings of a specific widget, hover over the widget's *Information* button, and the information will be displayed in a pop-up window.



NOTE:
The *Menu* and *Filter* pull-down menu options may vary, depending on the individual widget.



Dashboard Quick Start

Analysis Screens Overview

Analysis Overview

The Analysis screens provide more detailed information on real-time statistical data and the status of your network. The system's main dashboard screens were generated using pre-defined Analysis screens; however, by clicking the main menu button (☰), you can navigate to the system's different Analysis screens.

Note: clicking on the **Analysis** tab at the top of the screen will take you to the **Analysis > Overview** screen by default. If you have navigated to a different **Analysis** screen, when you click on another tab and click the **Analysis** tab again, this will take you to your last **Analysis** screen.

Network Activity

Gives an overall view of your network activity, including mail and web activity. It is categorised into top *Users* and *Applications*, and *Results* and *Module* summary.

☰ > Analysis > Activity > Overview



Attacks Overview

Gives an overall view of attacks that Network Box has blocked. It is categorised into *Top Threats*, Source of Attacks, and provides *Event Logs* of traffic that are not *Audit*.

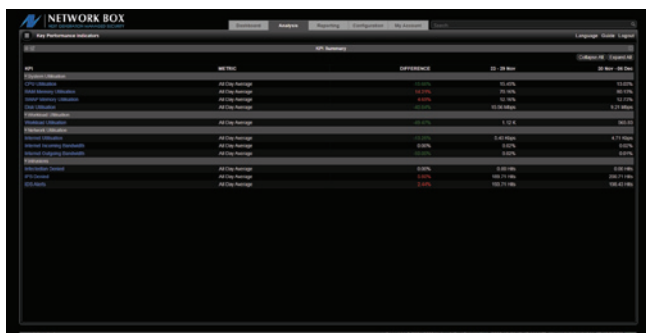
☰ > Analysis > Attacks > Overview



Key Performance Indicators (KPIs)

Each Network Box system leverages the concept of KPIs, to provide periodic summary and comparison of key metrics within your network.

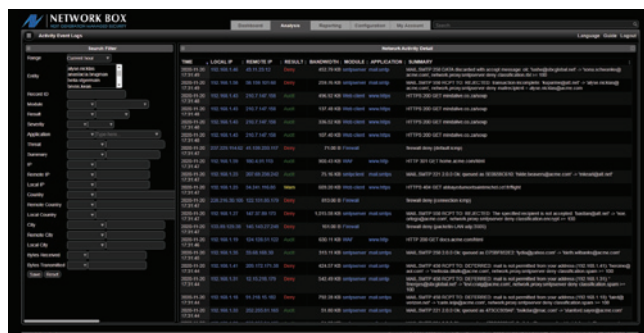
☰ > Analysis > KPI



Event Logs

All network *Events* are logged and audited by the Network Box system. To view all mail and web client *Events*:

☰ > Analysis > Activity > Event Logs





Dashboard Quick Start

Reporting Screens Overview

Reporting Overview

With Network Box, all actions and events are logged and audited to ISO standards. A central, unified logging system is used to collect logging data throughout the system to generate data-rich reports.

In addition to default weekly KPI reports, you can create customised reports on anything available in the system. These reports can either be generated on-the-fly for real-time instant reports or scheduled to be delivered periodically via email.



My Schedule Screen

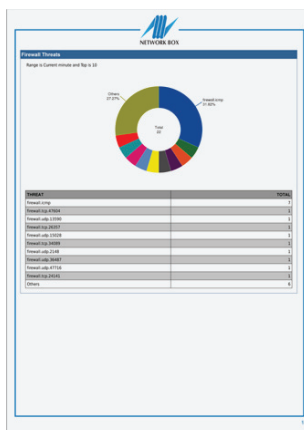
This screen displays your active reports and allows you to manage them accordingly. Using the **EDIT** function of each report, you can configure the reporting contents. You can set it to be delivered periodically at a scheduled time, reporting on a specified time frame. The reports are available in PDF and CSV formats.

This is covered in greater detail in the *Reporting* section (p21-p27) of the **Dashboard Admin Guide**.

To navigate to the screen:

> Reporting > My Schedule

Note: clicking on the **Reporting** tab at the top of the screen will take you to the **Reporting > My Schedule** screen by default. If you have navigated to a different **Reporting** screen, when you click on another tab and click the **Reporting** tab again, this will take you to your last **Reporting** screen.



Report: PDF format

Report: CSV format



Dashboard Quick Start

Configuration Screens Overview

Configuration Overview

The Network Box SOC (Security Operations Centre) will handle all changes to your configurations. However, the dashboard can be used to configure non-security related policies.

These include:

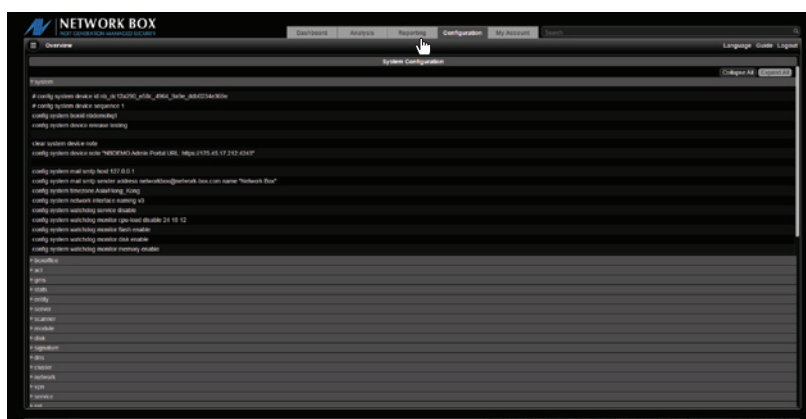
- Access Control Lists
- Entity Management
- Email whitelisting/blacklisting
- Web Browsing access/rules

This is covered in greater detail in the *Configuration* section (p28-p36) of the *Dashboard Admin Guide*.

Viewing your configurations

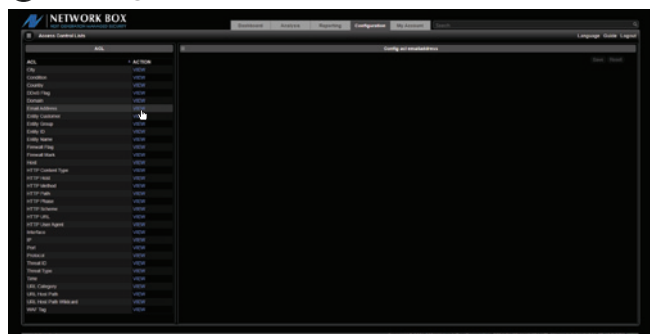
You can view your current configuration in the *System Configuration* screen.

> Configuration > Overview



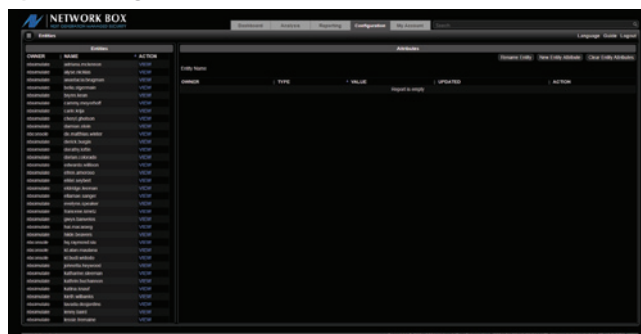
Access Control List Screen:

> Configuration > Access Control Lists



Entity Management Screen:

> Configuration > Entities > Entities



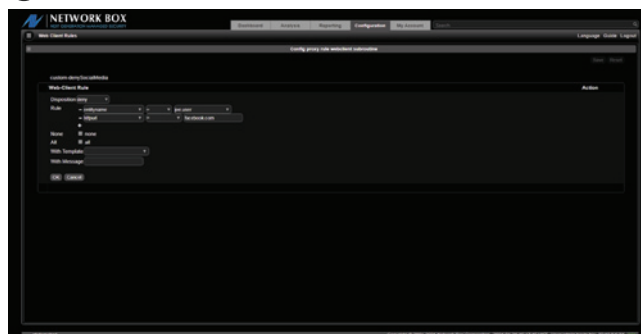
Personal Whitelist / Blacklist Screen:

> Configuration > Anti-Spam > [Personal Whitelist] or [Personal Blacklist]



Web Client Rules Screen:

> Configuration > Content Filtering > Web Client Rules





Dashboard Quick Start

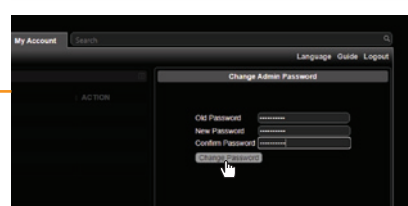
My Account Screen Account Settings

My Account Overview

The *My Account* screen allows you to manage your admin account settings, such as your password and notification preferences. Other user accounts can be maintained using the *Entities* widget in *Configuration* options (p30 of the **Dashboard Admin Guide**).

To access your account settings, click the **My Account** tab at the top, or navigate via:

☰ > My Account > My Account Overview

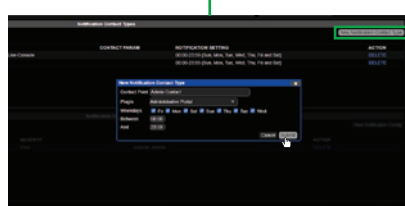


Changing your admin password

In the *Change Admin Password* widget, enter the following:

- Old Password
- New Password
- Confirm Password

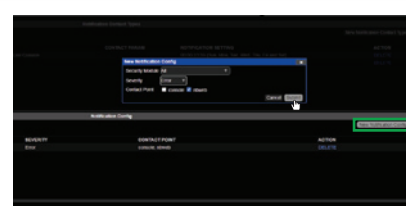
Note: any user with an admin password entity will be permitted access to the dashboard.



Notification contact settings

In the *Notifications Contact Types* widget, click **DELETE** to remove a specific contact type; or click **New Notification Contact Type**, to add a new one.

From the resulting pop-up window, input the details and click **Submit** to confirm, or click **Cancel**.



Notification configurations

In the *Notifications Config* widget, click **DELETE** to remove a specific configuration; or click **New Notifications Config**, to add a new one.

From the resulting pop-up window, input the details and click **Submit** to confirm, or click **Cancel**.



Dashboard Quick Start

Main Dashboard Screens Dashboard Customisation

Changing the layout of the dashboard

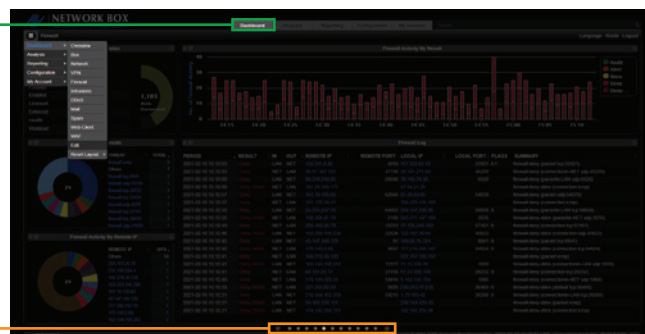
Editing main dashboard screens

#1

To change the layout, firstly click on the **Dashboard** tab. Next, navigate to the dashboard you wish to edit using the navigation arrows at the bottom or the menu button (☰).

To edit the dashboard:

☰ > Dashboard > Edit



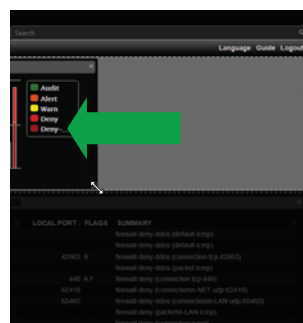
#2

Adjusting widget size

Move the mouse cursor to the widget's corner until the cursor changes to (↖↗). Click and drag to resize, and release once the widget has locked into place.

Moving widgets

Hover around the top of the widget until the mouse cursor changes to (↕). Click and drag the widget to your desired position and release. The widgets will re-order accordingly.



#3

Changing the appearance of the widget

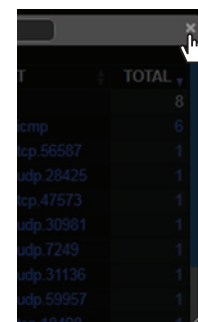
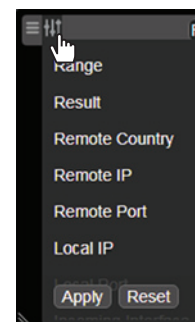
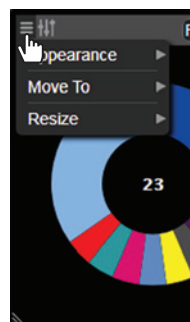
Click on the menu button (☰) and make your changes from the drop-down options.

Changing the data metrics

Click on the filter button (⌵) and make your adjustments. When you have finished, click **Apply** to set the changes.

Removing a widget

Click the delete button (✕) to remove the widget.



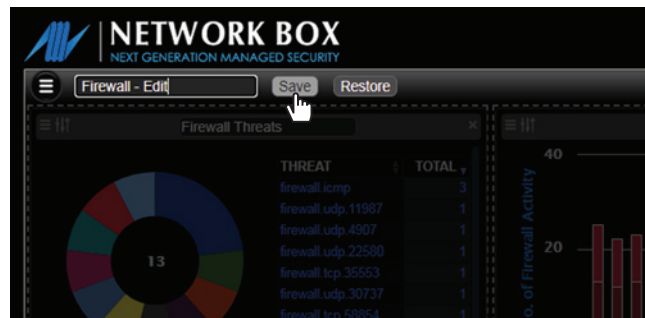
#4

You can rename your screen using the text field at the top. When you have finished making your changes, click **Save**. Clicking **Restore** will revert your layout to your previously saved version.

To reset to the original layout:

☰ > Dashboard > Reset Layout > Advanced

Note: by resetting the layout, you will lose any saved dashboard screens.





Dashboard Quick Start

Main Dashboard Screens Dashboard Customisation

Changing the layout of the dashboard

[continued]

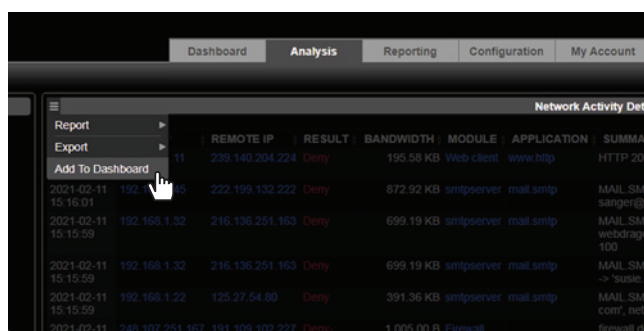
In addition to the main screens, the dashboard allows you to create custom screens. Thus, you can instantly access particular data without navigating to the relevant *Analysis* screen and creating the custom filters every time you want to view that data.

Creating custom dashboard screens

#1

Navigate to the widget using the menu button (☰), and use the filter options to fine-tune the data you want to display. When you have finished, add the widget to the dashboard via:

☰ > Add to Dashboard



#2

The widget will be added to a new dashboard screen. The dashboard uses a 4 squares x 3 squares grid, and the size and position of the widget can be edited in any way to fit within the grid. To resize/move the widget, hover over it until the mouse icon changes to (↖↗) / (↕↔), then click, drag and release to the new position.

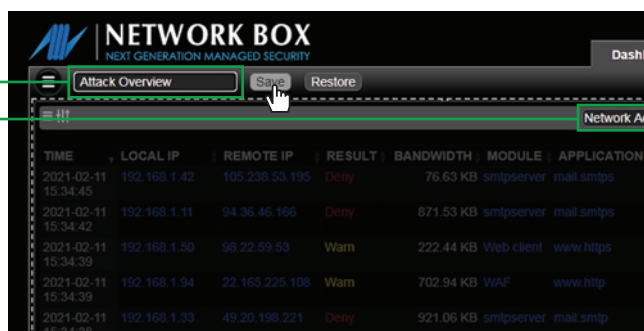


#3

You can rename your new dashboard screen and the widgets within, using the text fields at the top.

To add more widgets to the new dashboard screen, repeat steps #1 and #2.

When you have finished editing, click Save. Clicking on Restore will revert your layout to your previously saved version.



#4

When you have saved your new dashboard screen, you can navigate to it by:

☰ > Dashboard > [your dashboard screen]

Alternatively, you can navigate to the new screen by clicking the relevant navigation icon at the bottom.

Note: if you reset your layout, you will lose any saved dashboard screens.



The HTML-5 based Network Box Dashboard gives you real-time visual feedback of both cyber attacks and your network status. Made up of hundreds of different widgets; it is fully customisable, and the layout can be changed to give you complete control over how you want to view and monitor your network.



www.network-box.com



The trademarks, including but not limited to "Network Box" and the curly "N" device, are either trademarks or registered trademarks of Network Box Corporation Limited. Other trademarks and product names used in this publication are for identification purposes only, and may be the trademarks of their respective companies. Features and specifications are subject to change without notice. Benchmarking is performed with representative data, on a function by function basis. Weights and measurements are approximate only. Actual models may vary in appearance to the illustration and photographs provided.

Copyright © Network Box Corporation Limited 2021.