

# WEB ADMINISTRATION PORTAL

## Dashboard Overview

### CONTENTS

- 01 Default Dashboard Overview
- 02 Widgets Functions Overview
- 02 Functions Menu
- 03 Filters Menu
- 04 Information Display
- 04 Summary



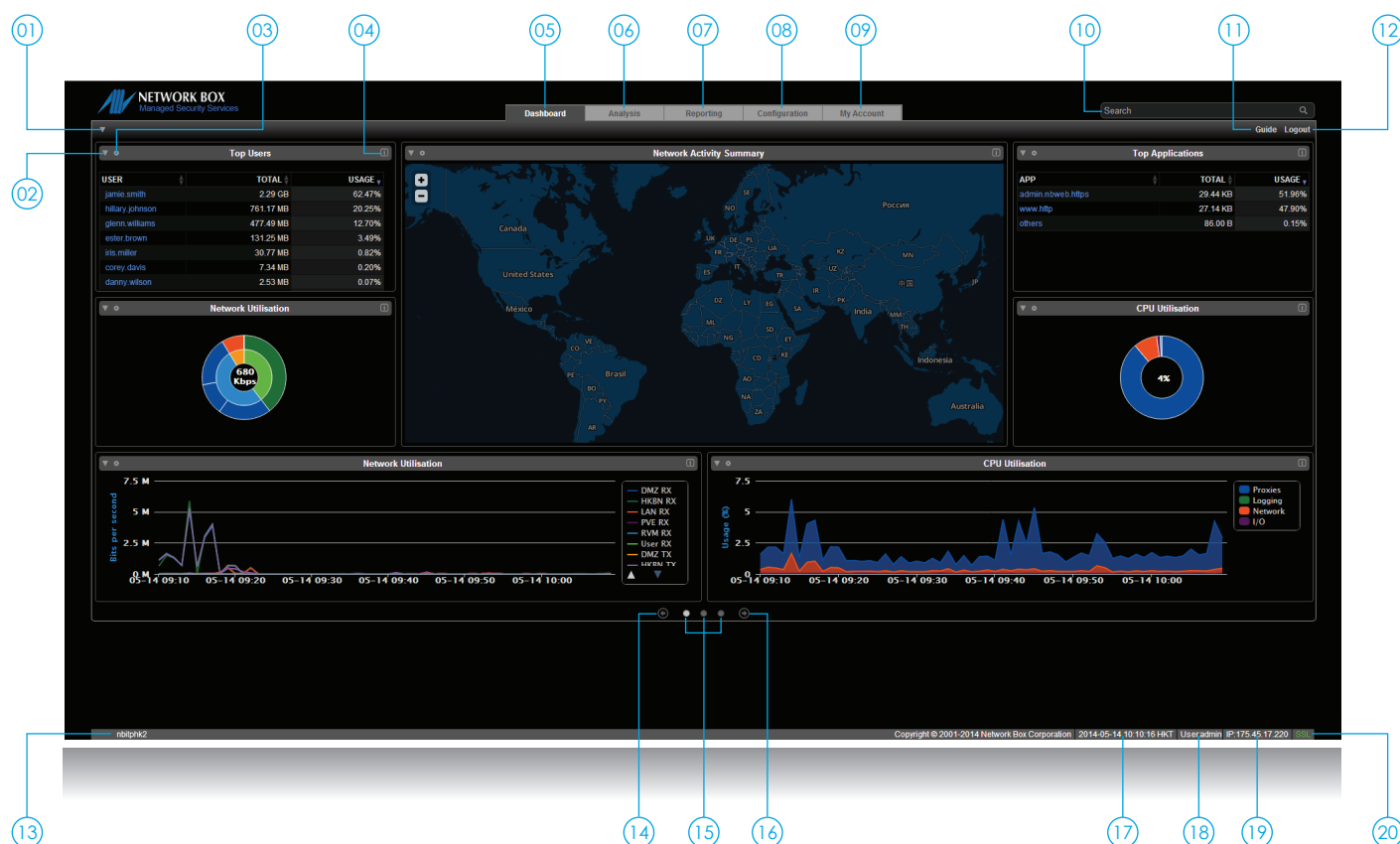
NEXT  
GENERATION  
MANAGED SECURITY



[www.network-box.com](http://www.network-box.com)

## Default Dashboard Overview

The HTML-5 dashboard is made up of several different widgets which can be customized. For ease of access there is also a default dashboard in the *Dashboard Main Menu*.



## Key

- |  |                                 |
|--|---------------------------------|
| 01 Dashboard Main Menu button          | 11 Administrative Guide button  |
| 02 Widget - Functions Menu button      | 12 Logout button                |
| 03 Widget - Filters Menu button        | 13 Box ID                       |
| 04 Widget - Information Display button | 14 Scroll to Left Dashboard     |
| 05 Dashboard tab                       | 15 Dashboard Navigation buttons |
| 06 Analysis tab                        | 16 Scroll to Right Dashboard    |
| 07 Reporting tab                       | 17 Date and Time Display        |
| 08 Configuration tab                   | 18 Login User ID                |
| 09 MyAccount tab                       | 19 IP Address                   |
| 10 Search Bar                          | 20 Encryption Level             |

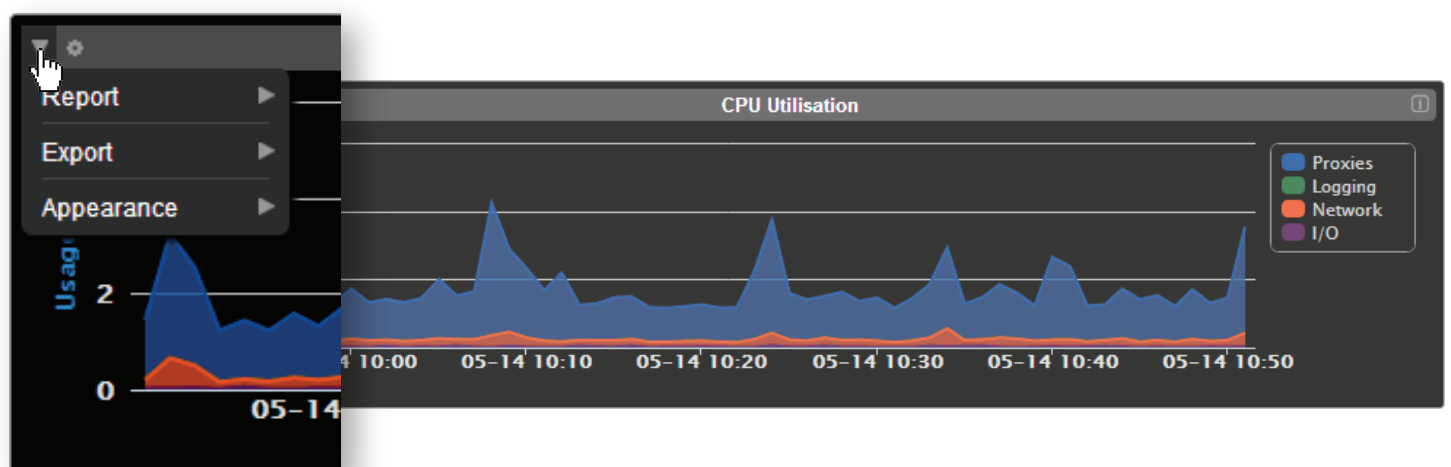
# Widget Functions Overview

Each individual widget has three main buttons:

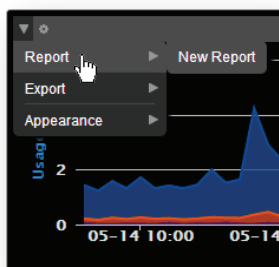
- ▼ Functions Menu
- ⚙ Filters Menu
- i Information Display

The options available for the *Functions Menu* and *Filters Menu* may vary depending on the widget. For this example we are using the *CPU Utilisation* widget.

## Functions Menu

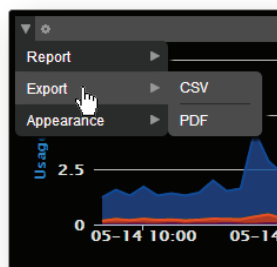


Report options



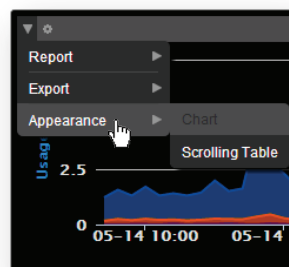
Adds this widget to a new or existing report. This will be covered in *Creating Customized Reports*.

Export options



Exports the widget to an A4 PDF or CSV file. The graphics will be adjusted to use a printer friendly colour scheme.

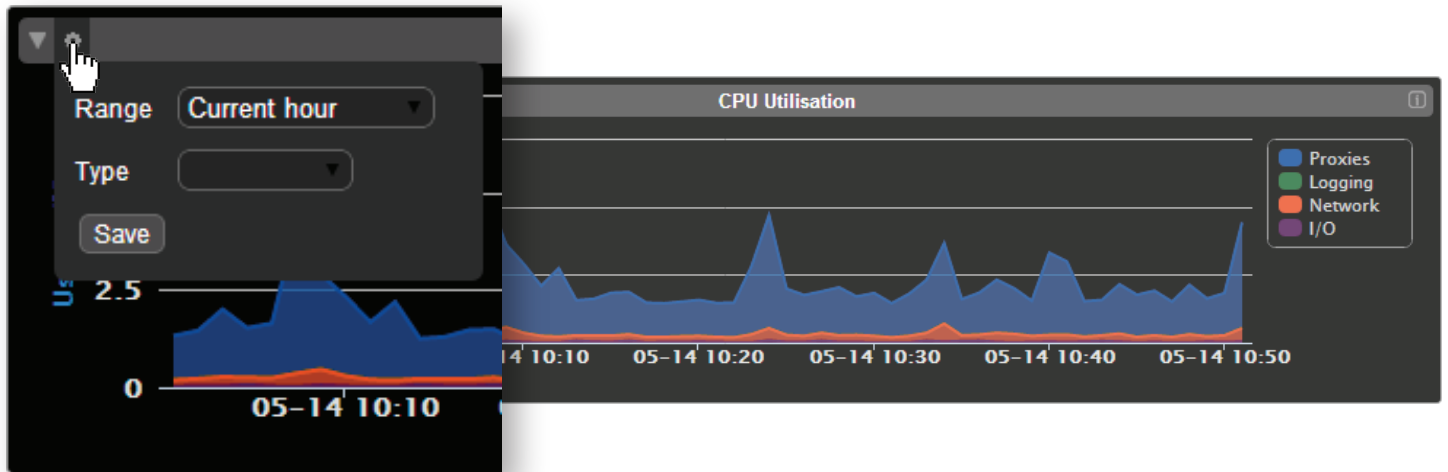
Appearance options



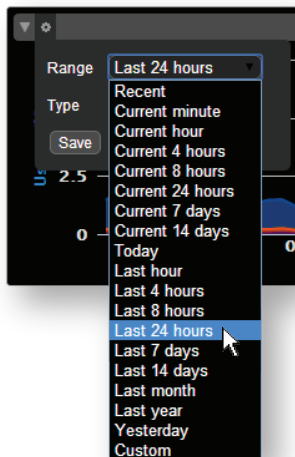
Option to switch the display data between a graphical chart or a text-based table.

When you click on the Function menu button you will be presented with options, this may vary depending on the widget. In this example, there are three options: Report, Export and Appearance.

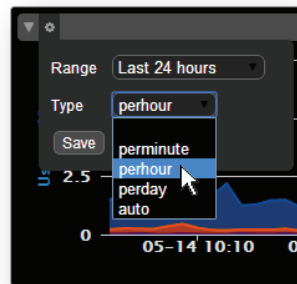
## Filters Menu



Range options

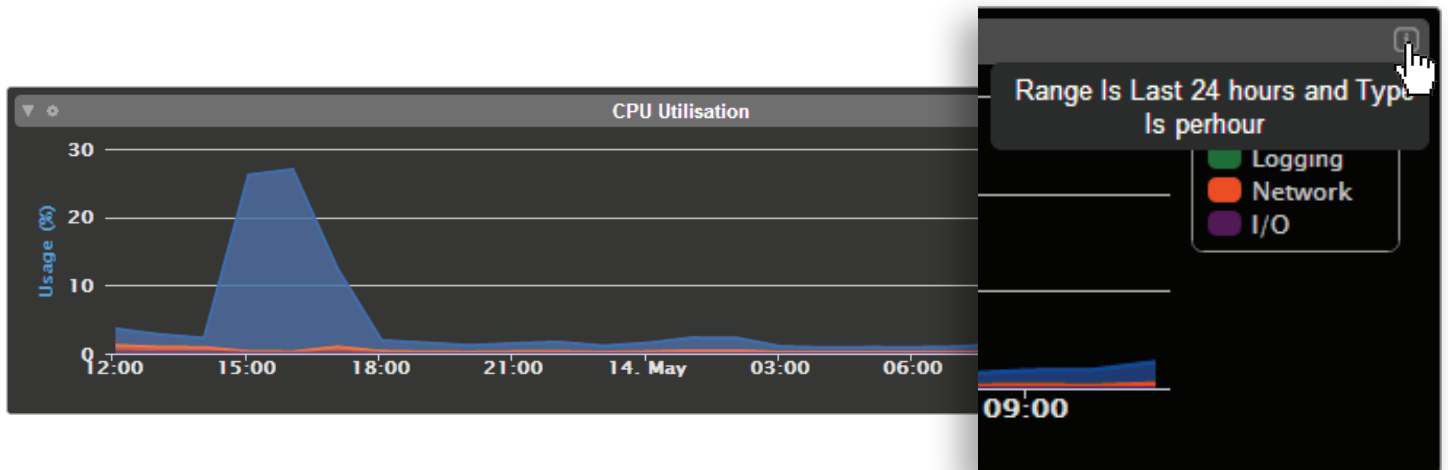


Type options



From the drop-down menu, you can choose the Range and the Type to be displayed in the widget. Once the options are selected, click the **Save** button. The widget will display the data in the new settings.

## Information Display



When you mouse over the information icon, the filter settings will be displayed. In this instance only the range and type are displayed but there more setting will be displayed depending on the type of widget.

## Summary

The HTML-5 based Network Box Dashboard is designed to show you real-time statistical data of the status of your network, box or whatever you want to see, in an intuitive and easy to understand way. This is fully customisable giving you complete control on how you want to monitor your network.



Copyright © Network Box Corporation Limited 2014.

The trademarks, including but not limited to "Network Box" and the curly "N" device, are either trademarks or registered trademarks of Network Box Corporation Limited. Other trademarks and product names used in this publication are for identification purposes only, and may be the trademarks of their respective companies. Features and specifications are subject to change without notice. Actual appearance may vary in to the illustration and photographs provided. No part of this document or any of its contents may be reproduced, copied, modified or adapted, without the prior written consent of Network Box Corporation Limited.